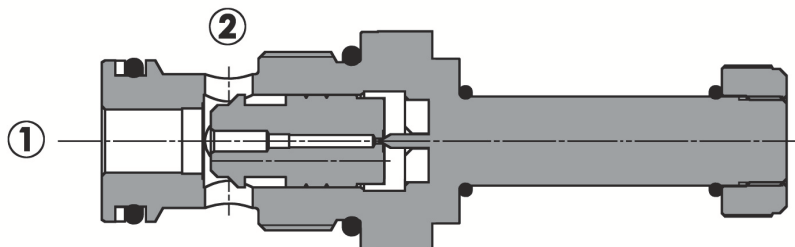
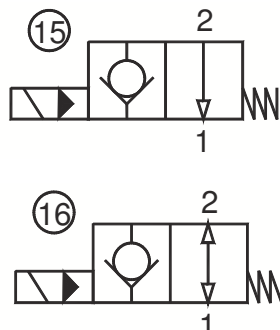


**Valvola elettrica 2 vie, pilotata, normalmente aperta, filettatura gas**  
**2 way, pilot operated electric valve, normally open, bsp thread**

Rev.02-2016/03



**SPECIFICHE TECNICHE**

**Materiali:** cartuccia in acciaio zincato. Componenti interni in acciaio trattato termicamente.

**Campo di portata:**

3/4: 2-70 L/min; 1": 4-150 L/min

**Pressione max.:** 350 bar

**Coppia di serraggio in cavità:** vedere pag.2

**Cavità:** vedere sezione X

**Peso cartuccia:** vedere pagina 2

**Bobine:** versione C-13, vedere sezione Y

**Temperatura olio:** -20°C + 80°C

**Temperatura ambiente:** -30°C + 60°C

**Filtrazione consigliata:** nominale max. 10µ, ISO 4406-19/17/14 (NAS8) o minore

La variazione di voltaggio in ingresso non deve eccedere il ±10% del valore nominale.

**TECHNICAL SPECIFICATIONS**

**Materials:** cartridge in steel zinc plated, internal parts in hardened steel.

**Flow range:**

3/4: 2-70 L/min; 1": 4-150 L/min

**Max. pressure:** 350 bar

**Installation torque:** see page 2

**Cavity:** see section X

**Cartridge weight:** see page 2

**Coils:** version C-13, see section Y

**Oil temperature:** -20°C + 80°C

**Ambient temperature range:** -30°C + 60°C

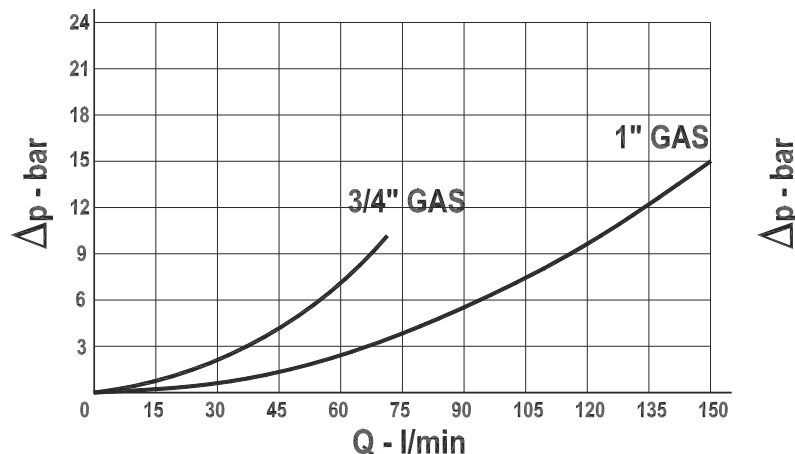
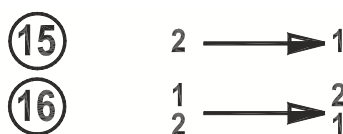
**Recommended filtration:** nominal max. 10µ, ISO 4406-19/17/14 (NAS8) or less.

Inlet voltage fluctuations must not exceed ±10% of nominal voltage.

**DIAGRAMMA PERDITE DI CARICO - PRESSURE DROP CURVES**

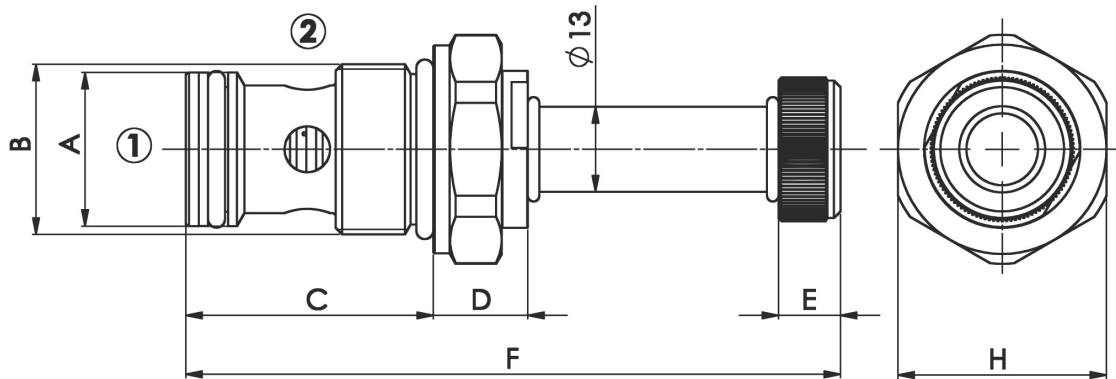
Viscosità olio 24 mm<sup>2</sup>/sec. (3,5 °E)  
 Temperatura 50 °C

Oil viscosity 24 mm<sup>2</sup>/sec. (3,5 °E)  
 Temperature 50 °C

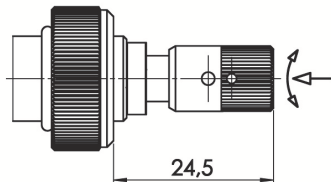


**Valvola elettrica 2 vie, pilotata, normalmente aperta, filettatura gas**  
**2 way, pilot operated electric valve, normally open, bsp thread**

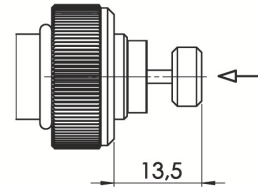
Rev.02-2016/03



**Emergenza "B" (spingi e gira)**  
**Manual override "B" (push and twist)**



**Emergenza "P" (spinta)**  
**Manual override "P" (push)**



TIPO TYPE	A	B	C	D	E	F	H	CAVITA' CAVITY	COPPIA DI SERRAGGIO INSTALLATION TORQUE	PESO WEIGHT
	mm	BSP	mm	mm	mm	mm	mm		Nm	Kg
FP-22-CP-3/4"-15/16	23.5	3/4"	38	14.5	9.5	100.5	32	21261	45 – 55	0.230
FP-22-CP-3/4"-15/16-P	23.5	3/4"	38	14.5	9.5	102.5	32	21261	45 – 55	0.240
FP-22-CP-3/4"-15/16-B	23.5	3/4"	38	14.5	9.5	102.5	32	21261	45 – 55	0.250
FP-22-CP-1"-15/16	30	1"	49	14.5	9.5	111.5	38	21331	60 – 70	0.340
FP-22-CP-1"-15/16-P	30	1"	49	14.5	9.5	113.5	38	21331	60 – 70	0.350
FP-22-CP-1"-15/16-B	30	1"	49	14.5	9.5	113.5	38	21331	60 – 70	0.360

**ESEMPIO DI ORDINAZIONE - ORDERING CODE EXAMPLE**

**FP 22 CP 3 / 4 1 5 \* \***

\* 3/4 – 3/4" BSPP  
 \* 1 – 1" BSPP  
 Dimensione - Dimension

15 – normalmente aperta, unidirezionale – normally closed,  
 \* 16 – normalmente aperta, bidirezionale – normally closed, bidirectional  
 Schema idraulico – Hydraulic scheme

Guarnizioni – Seals:  
 V=Viton \*  
 Omettere se BUNA-N – Omit if BUNA-N

Emergenza – Manual override  
 P = spinta - push \*  
 B = spinta e giro – push and twist  
 Omettere se non richiesta – Omit if not required